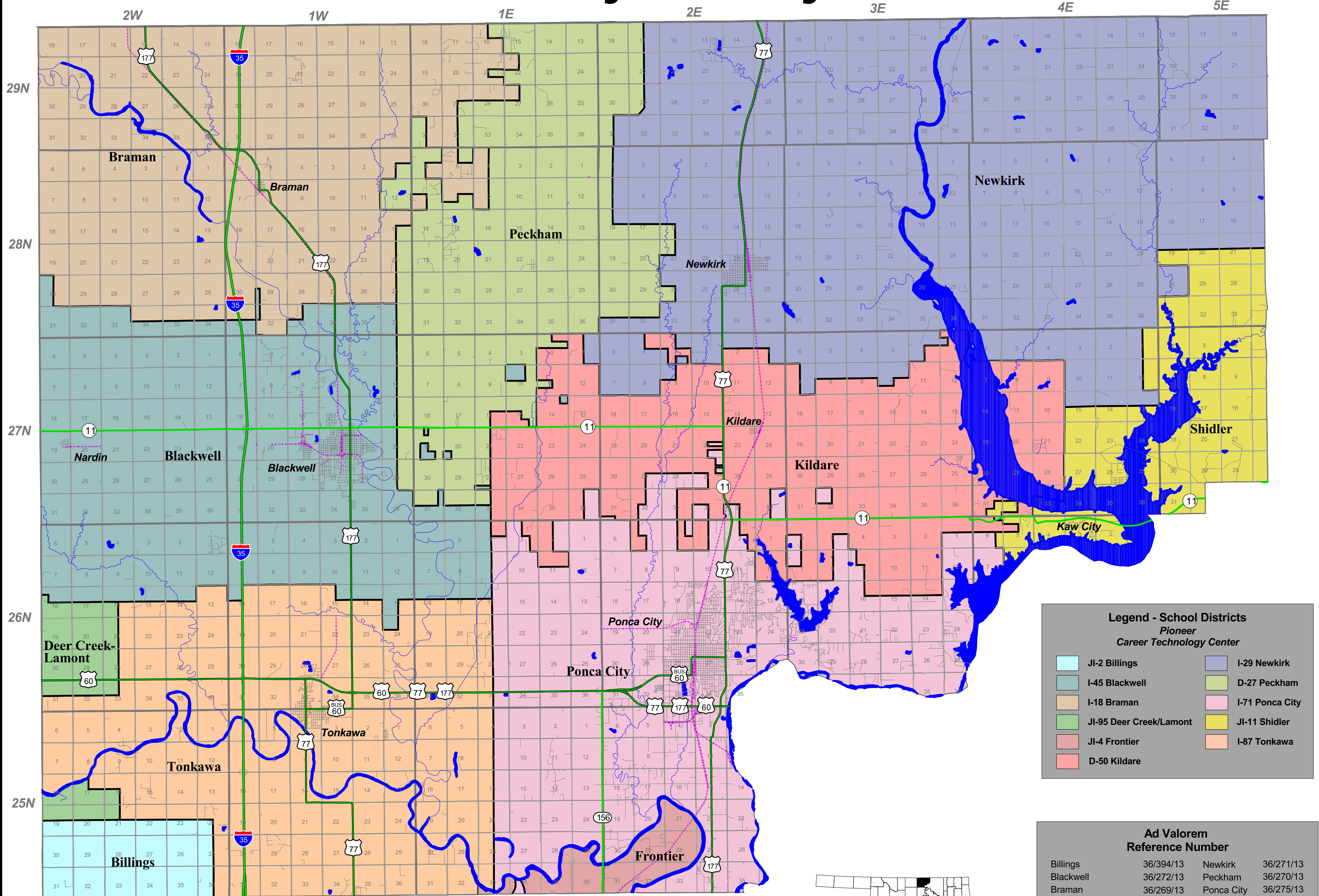


# Kay County

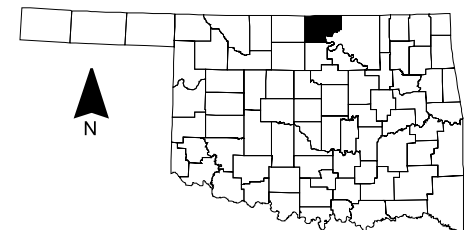


**Legend - School Districts**  
*Pioneer Career Technology Center*

JI-2 Billings	I-29 Newkirk
I-45 Blackwell	D-27 Peckham
I-18 Braman	I-71 Ponca City
JI-95 Deer Creek/Lamont	JI-11 Shidler
JI-4 Frontier	I-87 Tonkawa
D-50 Kildare	

**Ad Valorem Reference Number**

Billings	36/394/13	Newkirk	36/271/13
Blackwell	36/272/13	Peckham	36/270/13
Braman	36/269/13	Ponca City	36/275/13
Deer Creek-Lamont	36/228/13	Shidler	36/441/13
Frontier	36/395/13	Tonkawa	36/277/13
Kildare	36/273/13		



School District Boundaries are based on information provided by the Oklahoma Department of Education (405) 521-3812.

All boundary questions and changes should be directed to this agency.

Prepared for the Oklahoma Department of Education and the Oklahoma Tax Commission Ad Valorem Division by the Center for Spatial Analysis, University of Oklahoma. For additional copies, contact (405) 325-3131.

